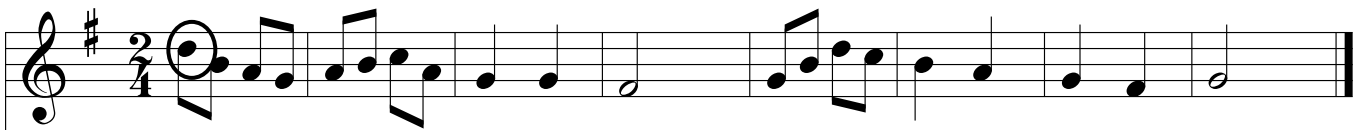


Aufnahmeprüfung im Fach Hörschulung Muster Lösungen

1. Einstimmiges Diktat



Der Ton wird angegeben

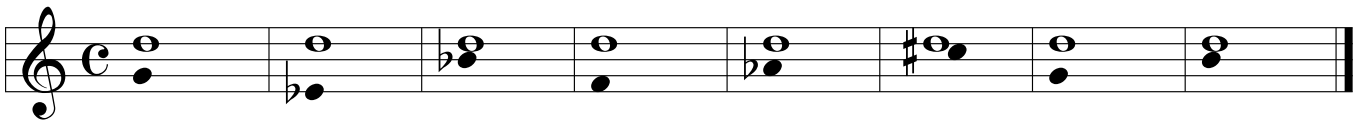


Der Ton wird angegeben

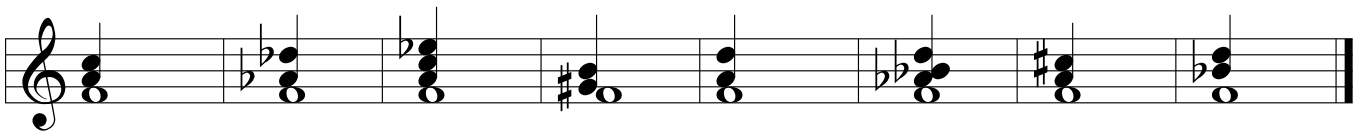


Der Ton wird angegeben

3. Intervalle notieren unterhalb



4. Akkordtöne notieren oberhalb



5. Rhythmus: Fehler notieren

Musical notation for exercise 5, consisting of two staves in 6/8 time. The first staff contains a sequence of eighth notes: G4, A4, B4, C5, D5, E5, F5, G5, A5, B5, C6, D6, E6, F6, G6, A6, B6, C7. The second staff contains a sequence of eighth notes: G4, A4, B4, C5, D5, E5, F5, G5, A5, B5, C6, D6, E6, F6, G6, A6, B6, C7. A '3' is written above the first three notes of the second staff, indicating a triplet. The word 'Fehler' is written below the first staff.

6. Die vorgespelte Melodie bestimmen: Nr.1, Nr.2, Nr.3 oder keine der drei

Musical notation for exercise 6, consisting of three staves in 2/4 time with a key signature of one sharp (F#). The first staff (labeled '1') contains a melodic line: G4, A4, B4, C5, D5, E5, F5, G5, A5, B5, C6, D6, E6, F6, G6, A6, B6, C7. The second staff (labeled '2') contains a melodic line: G4, A4, B4, C5, D5, E5, F5, G5, A5, B5, C6, D6, E6, F6, G6, A6, B6, C7. The third staff (labeled '3') contains a melodic line: G4, A4, B4, C5, D5, E5, F5, G5, A5, B5, C6, D6, E6, F6, G6, A6, B6, C7. The text 'vorgespelte Melodie' is written below the first two staves.